



Stellar Phoenix
Windows Data Recovery v3.0

Installation Guide



Stellar Phoenix Windows Data Recovery

Version 3.0

Installation Guide

Contents

Overview	3
Minimum System Requirements	4
Setting Up Hard Disk	4
Installation Procedure.....	9
Uninstalling the Software.....	11
Order and Activate the Software.....	12
Using the Software	17
Legal Notices.....	20
Technical Support	23
About Stellar	24

Overview

Stellar Phoenix Windows Data Recovery v3.0, an advanced recovery software designed for safe and non-destructive data recovery from hard disk or any removable media. It has an intuitive and simple graphical user interface, which makes the software outstanding.

This user guide will walk you through the entire software and make you familiar to the software. Stellar Phoenix has powerful search and scan features, which will discover all lost data. The advanced recovery process is capable enough to ensure that all your precious data are retrieved from the crashed system.

In short, data recovery is salvaging data from damaged, failed, corrupted or inaccessible primary storage media. The storage media is susceptible to damage due to various reasons such as a simple voltage fluctuation or a virus attack. This is precisely where a tool like Stellar Phoenix comes handy to recover your lost data.

The software's fully automated wizard will walk you through the simple steps:

Evaluate - Phoenix identifies the device, locates all partition on the inaccessible drive and list them.

Analyze - It examines the remains of file structure (boot sector, FAT copies or MFT and root directory) and the data area of the inaccessible drive and works the best path out to recover your files and directories.

Recover - All recoverable files and folders are presented in a tree structure. You can select your data files and directories and move the data to a safe location.

Main Features of Stellar Phoenix Windows Data Recovery

- Recovers **lost logical drives and data** from physical disk or any removable media.
- Recovers lost data from **formatted drives** (ie, from previous file system).
- Recovery of **raw data** even from badly corrupted media.
- Recovery of any specific file type can be performed using **File Filter** option.
- Recovered data can be saved to **FTP server** either in compressed or uncompressed form.
- **Advance scan** will search files based on file signature.
- **Scan information saved** can be used to resume recovery (ie, regenerate the scan result).
- **Image files** of physical disk, logical drives and CD/DVD drive can be created.
- Image files **enhance the speed** of recovery process.
- A **complete or partial** (specified region) image of the disk/drives can be created.
- **User-defined header** files can be added and edited.
- **Preview** of Graphic files, MS Office files and other files available in **Image viewer**, **File viewer** and **Hex viewer**.
- Software can search for **updates available** online on every startup.
- **Properties** of drives / folder / any file can be viewed.

Minimum System Requirements

Processor : Pentium class

Operating System : Windows 2000 / XP / 2003 / Vista

Memory : 128 MB or more of Random Access Memory (RAM)

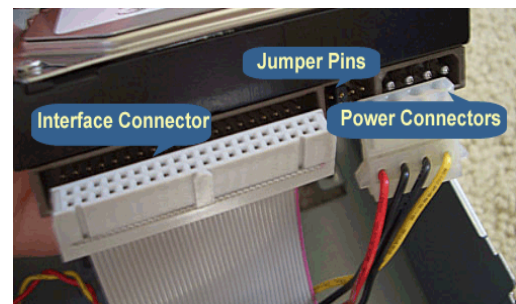
Hard Disk: 35 MB of free space

Setting Up Hard Disk

The method of installation and configuration of hard disk depends on the type of hard drive being installed. Mainly three types of hard disk are available - **IDE (ATA)**, **SATA**, and **SCSI**.

Setting Up Hard disk a quick look

1. **Power connector** – The cable from the power supply unit is plugged in here.
2. **Jumper pins** – There are usually three sets of pins corresponding to 'Master', 'Slave' and 'Cable Select'. One of the three sets of pins needs to be jumpered, thus giving the disk its configuration of either 'Master' or 'Slave'. The diagram for the exact jumper configuration varies from disk to disk and is provided on the hard disk itself.
3. **Interface Connector** – One end of the interface cable is connected to this, while the other end of the cable is connected to motherboard slot.



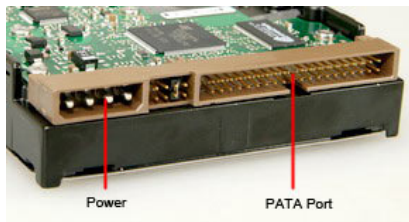
Note:

The jumper pins must be configured in such a way that the healthy disk should serve as the 'Master' and the damaged disk as the 'Slave'.

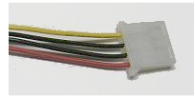
How to attach IDE (ATA) Hard disk

IDE [Integrated Drive Electronics] (**ATA**) [Advanced Technology Attachment] is a standard interface for connecting storage devices such as hard disk and CD-ROM drives inside personal computers.

Installing IDE (ATA) hard disk :



Power Cable



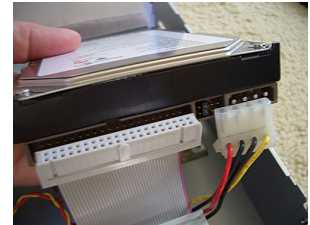
Interface Cable



Motherboard IDE Slots



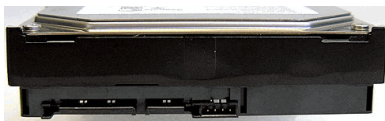
1. Turn OFF the computer, unplug the power connector and take the case off.
2. Set the jumpers on the drive.
3. Connect the hard disk to the motherboard using the IDE cable. One end of the cable is connected to the motherboard IDE port. The healthy 'Master' disk should be connected to the black connector. The damaged hard disk can be connected either to the middle plug (as Slave disk) or to the secondary IDE port on the motherboard using cable.
4. Once the cable is connected properly to the motherboard and the disks, switch ON the power.
5. Now, make sure the computer accepts the new disk, otherwise configure your BIOS.



How to attach SATA Hard disk

Serial ATA (SATA) hard disk offers a thin, small cable solution, which makes a much easier cable routing and offers better airflow in the computer when compared to the earlier ribbon cables used with ATA drives. Jumper settings are not required for SATA hard disks, so they are very easy to install.

SATA hard disk on SATA motherboard



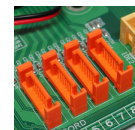
Power Cable



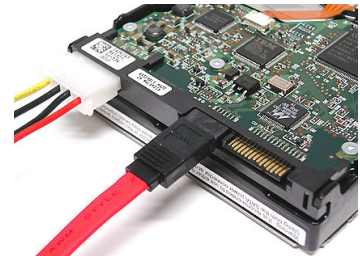
Interface Cable



Motherboard Slots



1. Turn OFF the computer, unplug the power connector and take the case off.
2. Attach the keyed serial cable to the drive.
3. Attach the other end of the cable to the motherboard.
4. Attach the power connector from the computer's power-supply unit to the drive.
5. Now, make sure the computer accepts the new disk, otherwise configure your BIOS. (see section *Configuring the BIOS*)



SATA Hard disk on IDE motherboard

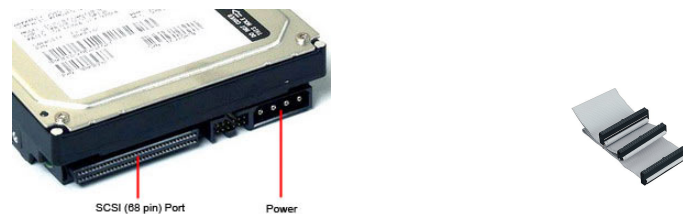
To attach a SATA hard disk to IDE hard disk computer, you have to use a SATA to IDE adapter. After attaching the adapter, you can install the hard disk. (see section *Installing IDE (ATA) Hard disk*)



How to attach SCSI Hard disk

SCSI (Small Computer System Interface) is a parallel interface standard used for attaching peripheral devices to computers. SCSI provides higher data transfer rates than ATA.

SCSI hard disk on SCSI motherboard

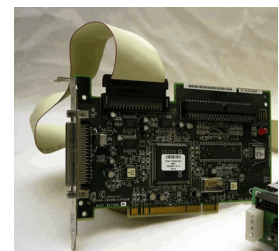


1. Turn OFF the computer, unplug the power connector and take the case off.
2. Set the SCSI ID using jumpers. (Set the jumper configuration)
[All SCSI devices include 3 jumpers in order to define the drive's SCSI ID string please refer to your SCSI hard disk manual for setting the proper jumper ID]
3. Attach the data cable.
4. Attach the power cable.
5. Now, make sure the computer accepts the new disk, otherwise configure BIOS. (see section *Configuring the BIOS*)



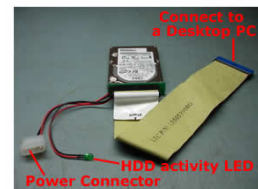
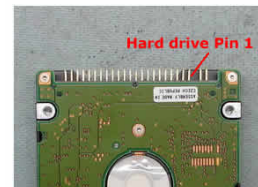
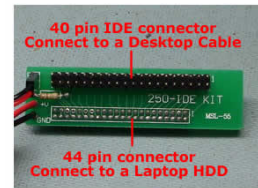
SCSI Hard disk on IDE motherboard

To attach a SCSI hard disk to IDE hard disk computer, you have to use a controller card. After attaching the card, you can install the hard disk. (see section *Installing IDE (ATA) Hard disk*)



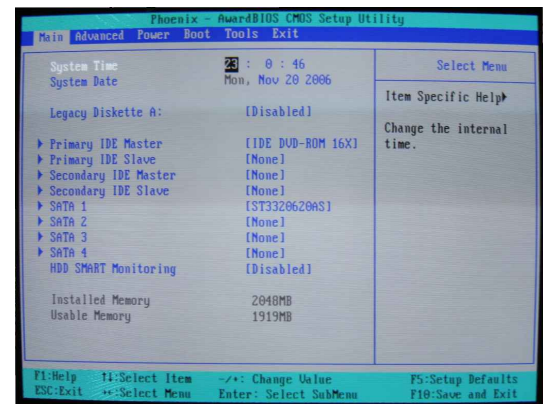
How to attach Laptop hard disk

1. To connect Laptop hard disk to desktop hard disk, you have to use a **Laptop IDE Hard Drive Adapter**.
2. When you connect a laptop IDE adapter, a desktop IDE cable and a laptop hard drive to each other, make sure to connect pin 1 on the hard drive, pin 1 on the desktop IDE cable to pin 1 on the adapter. On a desktop IDE cable, the side painted in red goes to pin 1.
3. On a laptop hard drive, there are 2 groups of pins. One group has 43 pins and the other has 4 pins. The pin 1 is located on the side closer to the group of 4 pins.
4. After you've assembled everything together, connect the IDE cable to a desktop PC. Connect it to a free IDE connector on the motherboard.
5. Now, make sure the computer accepts the new disk, otherwise configure your BIOS setup.



Configuring the BIOS

1. Switch on the system.
2. When the company logo and system information appears on the screen, press DEL key to enter the setup.
3. On entering the BIOS screen, use the arrow keys on the keyboard to access the IDE menu.
4. In the IDE menu, make sure that all channels are set to 'AUTO', which stands for 'Auto detect'.
5. Save the BIOS information and exit from the BIOS settings.



After hard disk installation and BIOS configuration, you can install Stellar Phoenix to the healthy hard disk.

Installation Procedure

To install the software successfully go through the following steps.

Step 1: Insert the Stellar Phoenix v3.0 CD into CD-ROM drive and wait for a while to start the setup automatically or open the drive and double click the Setup icon.

Step 2: The welcome page of the setup wizard will appear. Click **Next** to continue.

Step 3: The next screen shows the license agreement, Please review it carefully. If you agree with the terms, select **I accept the agreement** option and click **Next**.

Step 4: In this step you can specify the folder where the software is to be installed. Click **Next** to continue. The default location is **C:\Program Files \ Stellar Phoenix Windows Data Recovery**

Note:

To install software to a new location, click on **Browse** and select the folder.

Step 5: The **Start Menu Folder** window will appear. Here, you can specify the folder to place the Program shortcut in *Start -> Programs* menu. Click **Next** to continue.

- *By default, Setup creates a new folder named **Stellar Phoenix Windows Data Recovery** and place the shortcut there.*
- To select different folder, click on **Browse** and select the folder.

Step 6: You get **Select Additional Tasks** window. Here, you can create desktop and quick launch icons. Check the required options and click **Next** to continue.

Step 7: Next **Ready to Install** window will appear. You can view the summary of the Installation settings. Click **Install** to begin installation.

Step 8: Now Setup will copy the required files to the hard disk. The progress bar will show the status of the installation process.

Step 9: Installation is now complete. Click **Finish** to exit Setup.

*To run the software immediately after exiting the Setup program, leave the check mark in the check box next to **Launch Stellar Phoenix Windows Data Recovery**, else clear the check box.*

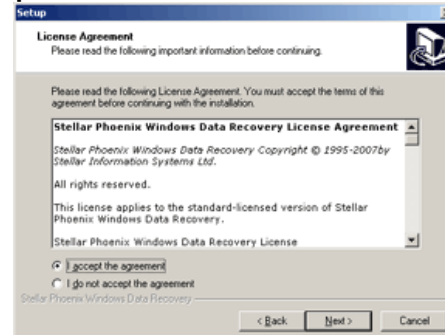
Note:

Do not install Stellar Phoenix to the partition from which you are trying to recover data. This may result in overwriting of your lost data and cause permanent damage.

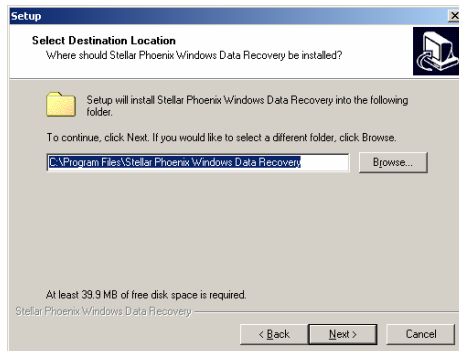
Step 1:



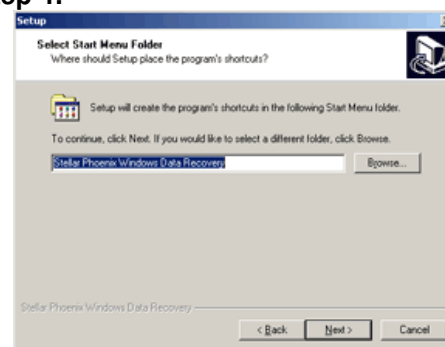
Step 2:



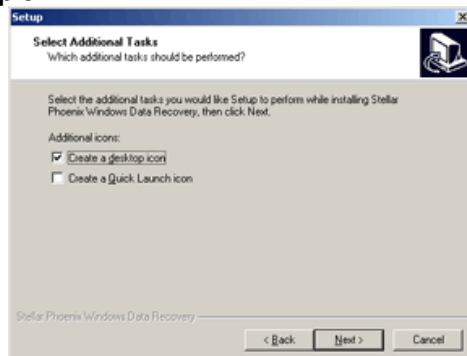
Step 3:



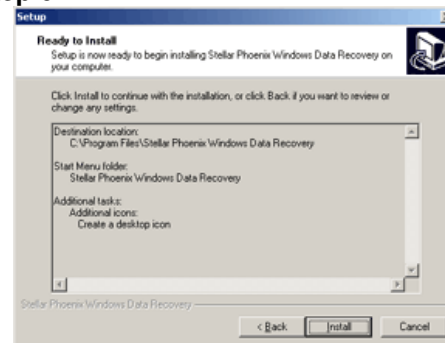
Step 4:



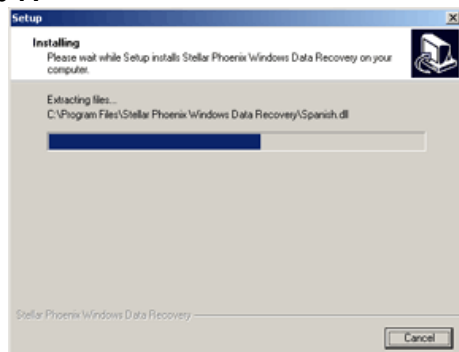
Step 5:



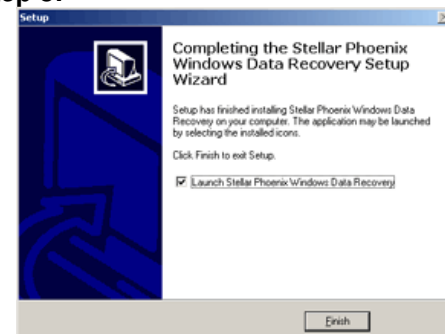
Step 6:



Step 7:



Step 8:



Uninstalling the Software

Stellar Phoenix Windows Data Recovery v 3.0 can be removed, either by using **Uninstall Stellar Phoenix Windows Data Recovery program** in the software or from **Add/Remove Programs** in the Control Panel.

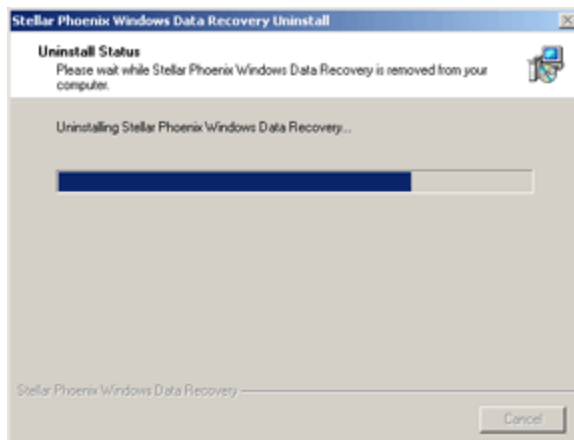
1. Click **Start => Programs => Stellar Phoenix Windows Data Recovery => Uninstall Stellar Phoenix Windows Data Recovery** or go to **Add/Remove Programs** in the *Control Panel*, select Stellar Phoenix Windows Data Recovery v 3.0 and then click **Change/Remove**.
2. Now **confirmation** window will appear. Click **Yes** to continue.
3. Stellar Phoenix Windows Data Recovery v 3.0 will then be removed from your system. When the process is complete you get a message confirming removal of the software, click on **OK**.

If you get a message saying 'Some elements could not be removed. These can be removed manually.', go to C:\Program Files and manually delete the Stellar Phoenix Windows Data Recovery folder (this step is optional and is not necessary for the removal of the software).

Step 1:



Step 2:



Step 3:



Order and Activate

Order Stellar Phoenix Windows Data Recovery:

You can purchase the software online. For price details and to place the order, please visit www.stellarinfo.com/disk-recovery-prices-fat-nt

Once your order is confirmed, a pre-paid serial # will be sent to you through e-mail, which would be required to activate the software.

Activate Stellar Phoenix Windows Data Recovery:

Note:

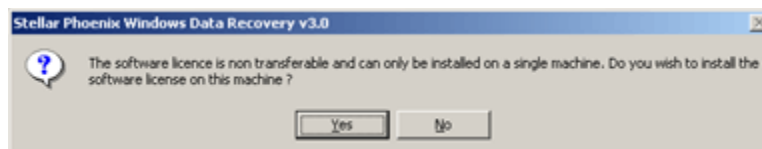
- If the software is downloaded from www.stellarinfo.com/disk-recovery-prices-fat-nt (i.e., *ESD version*), for the full functionality, the product must be activated using **Serial Key** (received through email after purchasing the product).
- If the software is installed using the product installation CD (i.e., *BOX version*), **hardware lock** is mandatory for the functioning of the software which is available with the software kit.

Stellar Phoenix Instant Activation over Internet

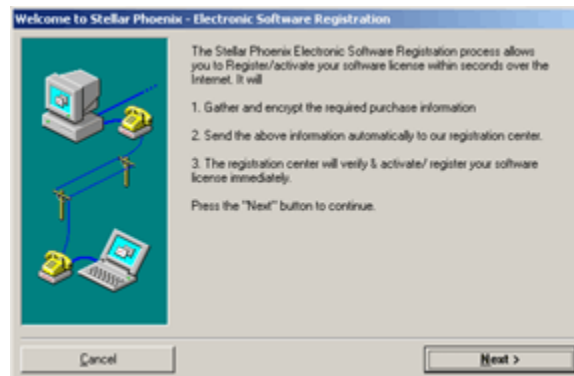
Once you purchase and receive the serial key (*pre-paid key received through email after purchasing the product*), activate the product instantly over Internet.

To activate the software,

- Click *Activation* -> *Activate Online* in the menu bar, the following window appear.



- Click **Yes**, the software checks for the Internet connection. Once it is connected, software registration wizard will appear.

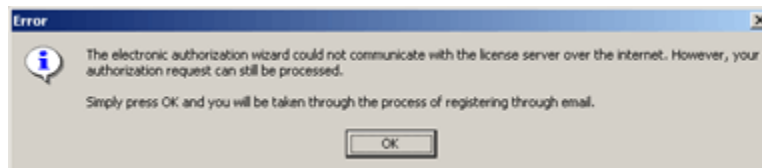


- Click **Next**, to continue further with the registration process.
- In the window that appears, type the *Serial number* (received through email after purchasing the product) in the textbox.
- Click **Next** to continue. The software would automatically communicate with registration server and would activate the software, as shown below.



Stellar Phoenix Activation using Email

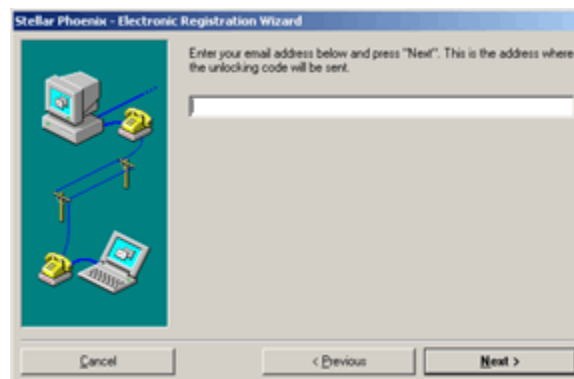
While activating the product over Internet, if the software could not communicate with the server, an error message shown below will popup. Click **OK**, for registering through email.



- The registration wizard for sending the authorization request will appear (shown below), as soon as you click **OK**.



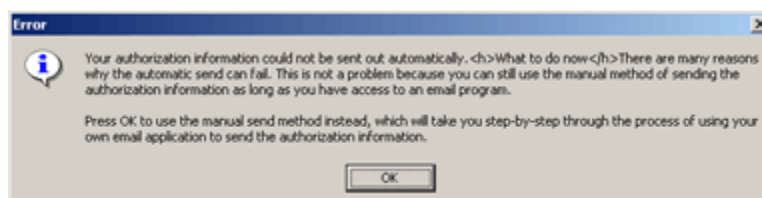
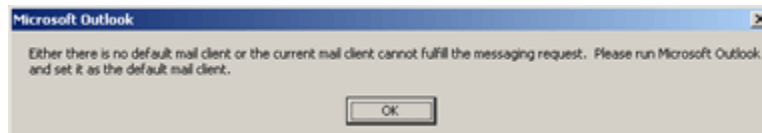
- Leave the option unchecked and click **Next** to continue.
- Following window appear, you have to type your email address in the text box to which the unlocking code is to be send. Once you have entered the email address, click **Next**.



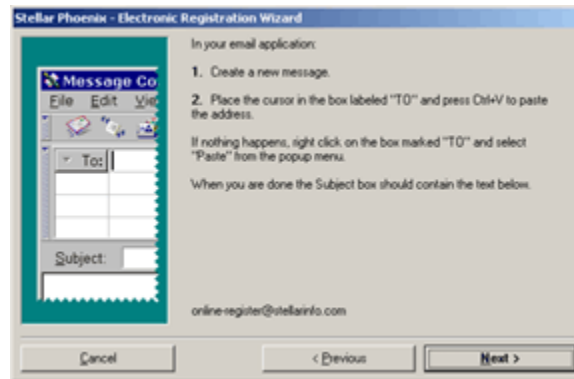
- The email address verification window will appear. Click **Yes**, if email address is correct.

The software automatically launches the default email client, and sends an email containing your unique site code with registration request to the registration server.

If the registration wizard could not launch the default email client, following messages will appear.



- Click **OK**, to continue the process manually.
- The window shown below appears.



- Open your email client (like Outlook Express, MS outlook, Eudora etc) and create a new message.
- Place the cursor in the box labeled *TO* and press CTRL+V to paste address. If it does not work, right click on the *TO* box and select paste from the popup menu. The *TO* box will contain the address as shown below.
- Click **Next**, following window will appear.
- Now place the cursor in the box labeled *Subject* in the same message window and paste (method same as above) the text. The *Subject* box will contain the text as shown below.
- Click **Next**, do the same process mentioned to paste the encrypted text content in the body of the message.
- Click **Next** to finish the procedure and send the email.



Make sure the content of the email sent for automatic authorization have the details as mentioned above. If they are incorrect, the server will reject your mail registration request.

- If the process is successful, following window will appear.

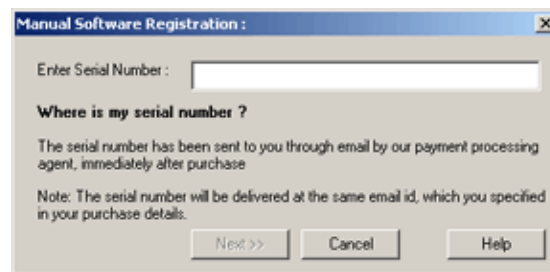
After processing your email, registration server would send you an email containing unlocking code/site-key.

Note:

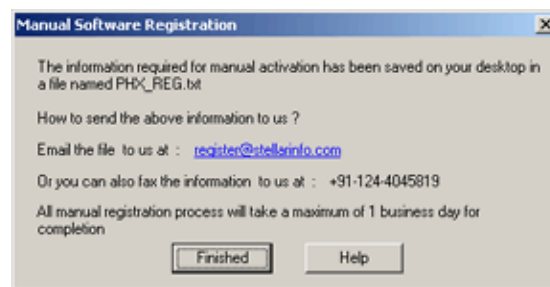
In case wizard is not able to launch the default email client, it automatically shifts to the manual process for sending the activation authorization request.

Activation without Internet

- If you try to activate the product, without Internet connection following window pops up. You have to enter the *Serial Number (received through email)* and click **Next**.



- You get the following window, click **Finish**.



Manual registration is complete, software would create a *PHX_REG.txt* file on your desktop and you just need to email this file to register@stellarinfo.com.

After verifying your details, we would send the unlocking code/site key to you through email.

To activate the product manually (after receiving the site-key):

- Click *Activation -> Manual Registration* in the menu bar.
- You get the following window, enter the *Site Key* and click *Validate*, to activate the software.



Note:

All manual registration process will take maximum of one business day for completion.

Using the Software

Stellar Phoenix Windows Data Recovery v3.0, an advanced recovery software designed for safe and non-destructive data recovery from hard disk or any removable media. It has an intuitive and simple graphical user interface, which makes the software outstanding. It is capable of recovering lost data from any drive (*physical disk or logical drives*) in the hard disk or any removable media.

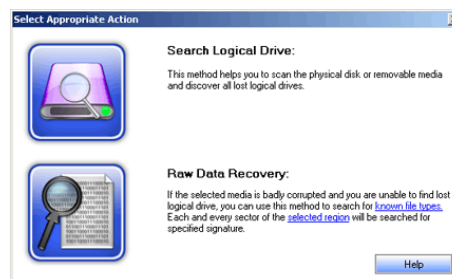
To recover lost data from physical disk / removable media / physical disk image:

- Double click on physical disk / physical disk image file in the left pane.
- Select Appropriate Action window will give you three options,

Search Logical Drive - This option will search for all the lost logical drives in the physical disk. Standard and Advance search are available. Standard search will be sufficient to explore the lost drive. However, if you are unable to find the lost drive, then go for advance search. While searching is going on, each lost drive discovered will be added to the tree structure. Finally, all the discovered logical drives will appear on the tree structure. Further you can recover data from these logical drives.

Raw Data Recovery - This option will recover raw data from badly corrupted drive. At times, search options will be unable to discover lost data from badly damaged disk. In that situation, raw data recovery option will help you to extract all the data from the severely damaged hard disk and displays the result in the tree according to the file types. You can recover either all or selected file(s) from the scan result. In this method, you can search drives for known file types or search from a selected region.

Create Image File - This option will generate an image of the physical drive. First, the file is saved with the file extension **.img** in the specified location and then the software creates the image of the drive reading sector by sector. A key feature of Stellar Phoenix Windows Data Recovery is that an image of the whole drive can be created or user can specify a region of the drive. The image file created can be further scanned and data can be recovered from it.



To recover lost data from logical volumes / logical volume image:

- Double click on logical volume (*drive from which data is to be recovered*)/ *logical volume image file* in the left pane.
- Select Appropriate Action window will give you three options,

Standard Scan - Scan performed in most cases, which quickly and efficiently search the selected drive/image file for lost files.

Advance Scan - This method takes more time to scan but has greater chance to discover lost data. It scans each cluster of the logical drive and also scans the entire unused cluster for known file types. In case of formatted drive, previous file system can be selected for scanning.

Create Image File - This option will generate an image of the logical drive. First, the file is saved with the file extension **.img** in the specified location and then the software creates the image of the drive reading sector by sector. A key feature of Stellar Phoenix Windows Data Recovery is that an image of the whole drive or an image of specified region of the drive can be created. The image file created can be further scanned and data can be recovered from it.

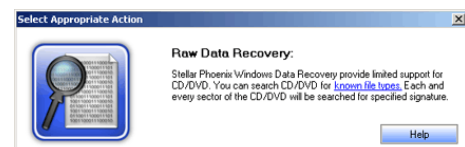


To recover lost data from CD/DVD drives:

- Double click on CD/DVD drive / image file in the left pane.
- Select Appropriate Action window will give you three options,

Raw Data Recovery - This option will recover raw data from badly corrupted CD/DVD. At times, search options will be unable to discover lost data from badly damaged disk. In that situation, raw data recovery option will help you to extract all the data from the severely damaged disk and displays the result in the tree according to the file types. You can recover either all or selected file(s) from the scan result. In addition, you can search CD/DVD for known file type. Every sector of CD/DVD will be searched for specified signature.

Create Image File - This option will generate an image of the drive. First, the file is saved with the file extension **.img** in the specified location and then the software creates the image of the drive reading sector by sector. The image file created can be further used to recover data.



Advanced Controls

- File Filter** : File filter is an advanced feature that accepts or rejects files based on the given criteria.
- Advance settings** : It consists of five options. It can be accessed from the Tools menu (Tools -> Advance Settings).
- Append Header File** : You can add, edit and delete the header files. In case of application embedded header, removal of header is not possible; you can only edit the file size.
- File Mask** : File Mask is used to view /recover specific file types based on user-defined criteria.
- File Preview** : This feature of Stellar phoenix allows the user to view the complete details of the selected drive like size, total clusters, offset and sector. You can also preview the graphic files (gif, bmp, png, tiff), MS Office files (doc, xls, ppt) etc. Other drives/file types can be previewed in hex viewer.
- Find & Find Next** : Find is used to search files of a specific type from the scan result. Once the first file is highlighted, to get the next file use Find Next.
- Save Scan Information** : Save Scan is used to save the directory tree structure generated after a disk/drive scan.
- Choose previous file system** : This is an additional feature provided by the software for advance scan. Choose previous file system can be used for scanning the formatted drive.
- Search Known File Type** : This is an additional feature provided by the software for searching and scanning. You can apply Known File Type feature, while extracting raw data from a damaged hard disk or CD / DVD drive or an image file of CD/DVD and for Advance Scan.
- Search Specified Region** : This is an additional feature provided by the software for raw data recovery and image file creation. You can select the region in the drive from where the raw data is to be recovered.

Legal Notices

Copyright

Stellar Phoenix Windows Data Recovery software, accompanied user manual and documentation are copyright of Stellar Information Systems Ltd, with all rights reserved. Under the copyright laws, this user manual cannot be reproduced in any form without the prior written permission of Stellar Information Systems Ltd. No Patent Liability is assumed, however, with respect to the use of the information contained herein.

© 1995 - 2007 Stellar Information Systems Ltd. All rights reserved.

Disclaimer

The information contained in this manual, including but not limited to any product specifications, is subject to change without notice.

STELLAR INFORMATION SYSTEMS LTD PROVIDES NO WARRANTY WITH REGARD TO THIS MANUAL OR ANY OTHER INFORMATION CONTAINED HEREIN AND HEREBY EXPRESSLY DISCLAIMS ANY IMPLIED WARRANTIES OF MERCHANTABILITY OR FITNESS FOR ANY PARTICULAR PURPOSE WITH REGARD TO ANY OF THE FOREGOING STELLAR INFORMATION SYSTEMS LTD ASSUMES NO LIABILITY FOR ANY DAMAGES INCURRED DIRECTLY OR INDIRECTLY FROM ANY TECHNICAL OR TYPOGRAPHICAL ERRORS OR OMISSIONS CONTAINED HEREIN OR FOR DISCREPANCIES BETWEEN THE PRODUCT AND THE MANUAL. IN NO EVENT SHALL STELLAR INFORMATION SYSTEMS LTD, BE LIABLE FOR ANY INCIDENTAL, CONSEQUENTIAL SPECIAL, OR EXEMPLARY DAMAGES, WHETHER BASED ON TORT, CONTRACT OR OTHERWISE, ARISING OUT OF OR IN CONNECTION WITH THIS MANUAL OR ANY OTHER INFORMATION CONTAINED HEREIN OR THE USE THEREOF.

Trademarks

Stellar Phoenix Windows Data Recovery® is a registered trademark of Stellar Information Systems Ltd.

Windows 2000®, Windows XP®, Windows 2003® and Windows Vista® are registered trademarks of Microsoft Corporation.

All other brand and product names are trademarks or registered trademarks of their respective companies.

License Agreement

Stellar Phoenix Windows Data Recovery Copyright © 1995-2007 by Stellar Information Systems Ltd.

All rights reserved.

This license applies to the standard-licensed version of Stellar Phoenix Windows Data Recovery.

Stellar Phoenix Windows Data Recovery License.

Stellar Information Systems Ltd.

Your Agreement to this License

You should carefully read the following terms and conditions before using, installing or distributing this software, unless you have a different license agreement signed by Stellar Information Systems Ltd.

If you do not agree to all of the terms and conditions of this License, then do not copy, install, distribute or use any copy of Stellar Phoenix Windows Data Recovery with which this License is included, you may return the complete package unused without requesting an activation key, within 30 days after purchase, for a full refund of your payment.

The terms and conditions of this License describe the permitted use and users of each Licensed Copy of Stellar Phoenix Windows Data Recovery. For purposes of this License, if you have a valid single-copy license, you have the right to use a single Licensed Copy of Stellar Phoenix Windows Data Recovery; if you or your organization has a valid multi-user license, then you or your organization have - has the right to use up to a number of Licensed Copies of Stellar Phoenix Windows Data Recovery equal to the number of copies indicated in the documents issued by Stellar when granting the license.

Scope of License

Each Licensed Copy of Stellar Phoenix Windows Data Recovery may either be used by a single person or used non-simultaneously by multiple people who use the software personally installed on a single workstation. This is not a concurrent use license.

All rights of any kind in Stellar Phoenix Windows Data Recovery, which are not expressly granted in this License, are entirely and exclusively reserved to and by Stellar Information Systems Ltd. You may not rent, lease, modify, translate, reverse engineer, decompile, disassemble, or create derivative works based on, Stellar Phoenix Windows Data Recovery, nor permit anyone else to do so. You may not make access to Stellar Phoenix Windows Data Recovery available to others in connection with a service bureau, application service provider, or similar business, nor permit anyone else to do so.

Warranty Disclaimers and Liability Limitations.

Stellar Phoenix Windows Data Recovery, and any and all accompanying software, files, data and materials, are distributed and provided AS IS and with no warranties of any kind, whether expressed or implied. In particular, there is no warranty for the quality of data recovered. You acknowledge that good data processing procedure dictates that any program, including Stellar Phoenix Windows Data Recovery, must be thoroughly tested with non-critical data before there is any reliance on it, and you hereby assume the entire risk of all use of the copies of Stellar Phoenix Windows Data Recovery covered by this License. This disclaimer of warranty constitutes an essential part of this License.

In addition, in no event does Stellar authorize you or anyone else to use Stellar Phoenix Windows Data Recovery in applications or systems where Stellar Phoenix Windows Data Recovery's failure to perform can reasonably be expected to result in a significant physical injury, or in loss of life. Any such use is entirely at your own risk, and you agree to hold Stellar harmless from any and all claims or losses relating to such unauthorized use.

General

This License is the complete statement of the agreement between the parties on the subject matter, and merges and supersedes all other or prior understandings, purchase orders, agreements and arrangements. This License shall be governed by the laws of the State of Delhi. Exclusive jurisdiction and venue for all matters relating to this License shall be in courts and fora located in the State of Delhi, INDIA and you consent to such jurisdiction and venue. There are no third party beneficiaries of any promises, obligations or representations made by Stellar herein. Any waiver by Stellar of any violation of this License by you shall not constitute, nor contribute to, a waiver by Stellar of any other or future violation of the same provision, or any other provision, of this License.

Copyright © 1995-2007 by Stellar Information Systems Ltd. All rights reserved.

Technical Support

Our Technical Support professionals will give solutions for all your queries related to Stellar Products. You can either **Call Us** or **Go Online** to our support section (www.stellarinfo.com/support).

Support Helpline

24 Hrs. a day Monday – Friday

USA <i>(Toll free)</i>	-	1-866-554-2512
USA	-	1-315-220-6245
UK <i>(Europe)</i>	-	+44-207-993-2293
Germany	-	+49-180-110-105-0051
India <i>(helpline)</i>	-	+91-921-395-5509
Skype Id	-	stellarsupport

Online Help

[Chat Live](#) with an Online technician

Search in our extensive [Knowledge Base](#)

[Submit Ticket](#) (If our Knowledge Base does not answer your question)

Login and view [Ticket Status](#) (If you already have a valid Ticket with you)

[Download Documents](#) on Product Usage (For Registered members only, i.e., user with login ID. If you are an unregistered user, please visit www.stellarinfo.com/esupport/users/login)

About Stellar

Stellar Information Systems Ltd. is a trusted name in the field of Data Recovery and Data Protection Software for more than a decade.

We provide the widest range of Data Recovery Products. Our range includes Data Recovery Software for almost all Operating Systems and File Systems.

Product line:

Data Recovery : A widest range of data recovery software that helps you recover your valued data lost after accidental format, virus problems, software malfunction, file/directory deletion, or even sabotage!. [More Info >>](#)

File Recovery: The most comprehensive range of file undelete and unerase software for Windows and MS office repair tools. [More Info >>](#)

Email Recovery: A wide range of mail recovery, mail repair and mail conversion applications for MS Outlook, MS Outlook Express and MS Exchange useful in instances of data loss due to damages and corruption of Email. [More Info >>](#)

Data Protection: A wide range of Prevent Data Loss, Data backup and Hard Drive Monitoring Applications to ensure complete data protection against hard drive crash. [More Info >>](#)

Data Sanitization: Data cleanup and file eraser utility can delete selected folders, groups of files, entire logical drives, System Traces & Internet traces. Once the data have been removed using Stellar Wipe - Data File eraser utility, it is beyond recovery limits of any Data Recovery Software or utility. [More Info >>](#)

For more information about us, please visit www.stellarinfo.com